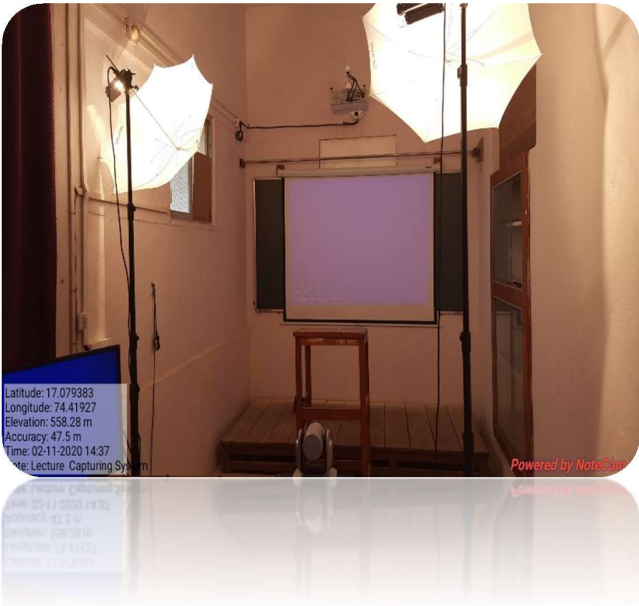


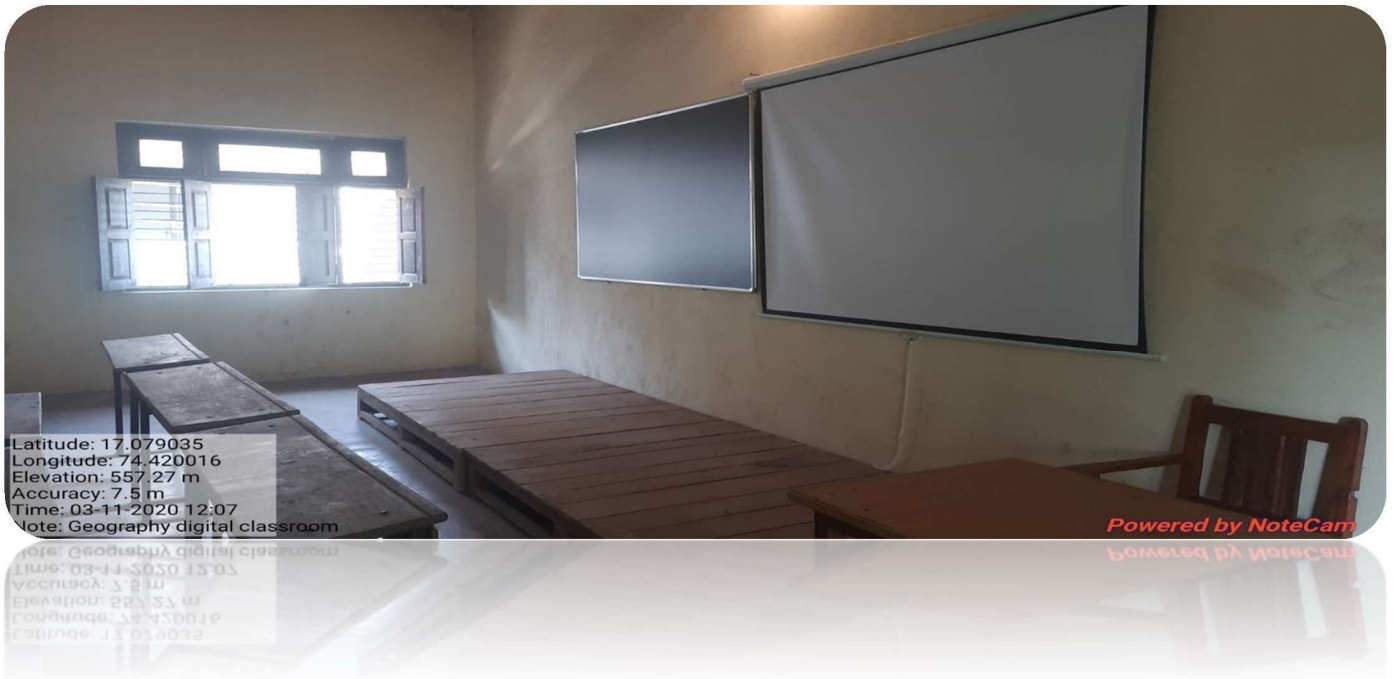
**Rayat Shikshan Sanstha's**  
**Dr. Patangrao Kadam Mahavidyalaya Ramanandnagar (Burl)**  
**Tal. – Palus, Dist. - Sangli**



Lecture Capturing System (New Developed) 2020 - 21



**ICT Enabled Geography Classroom 2020-21**

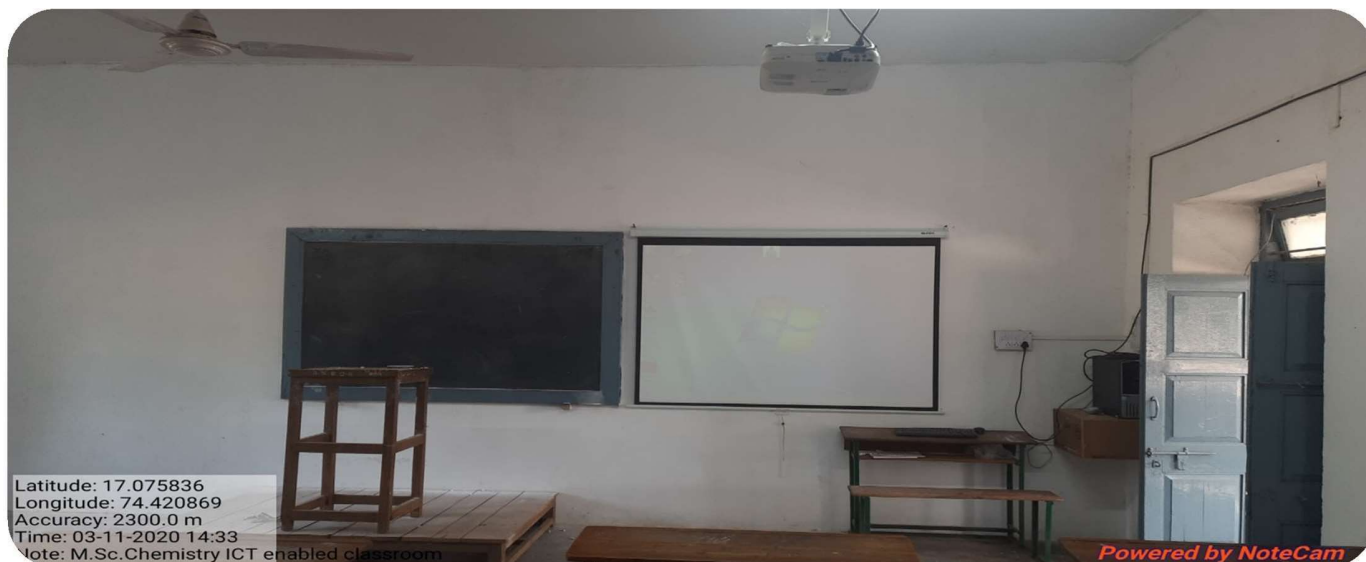




**BCA ICT Enabled Classroom (New Developed) 2020-21**



**ICT Enabled M.Sc. (Chemistry) Classroom 2019-20**



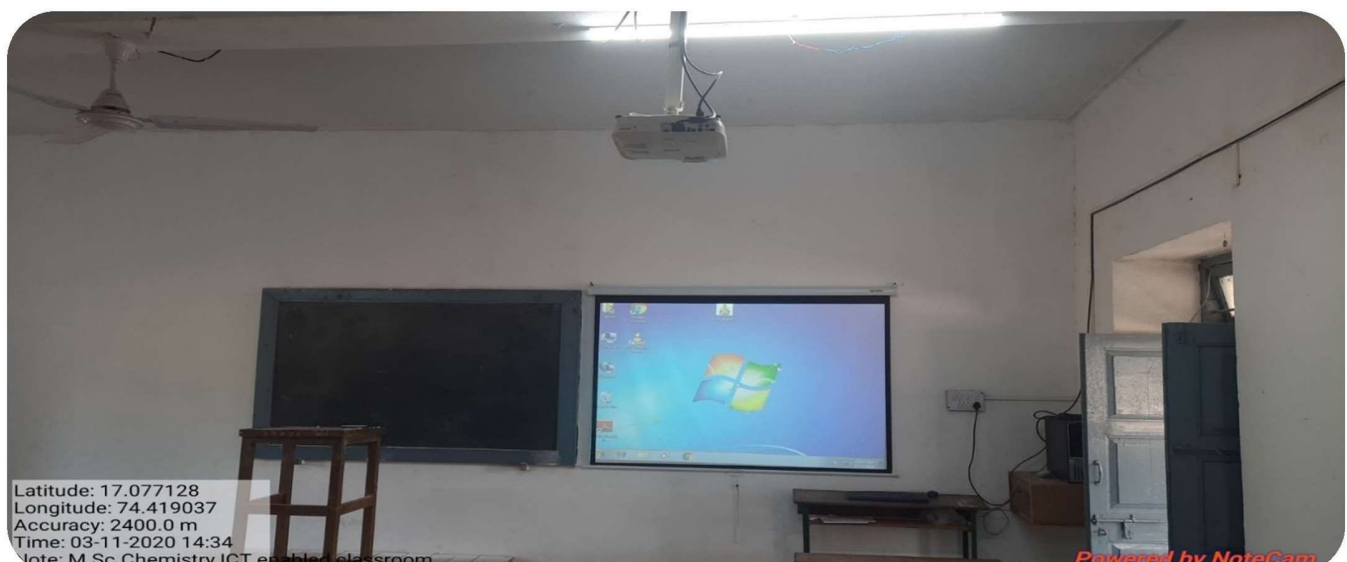
Latitude: 17.075836  
Longitude: 74.420869  
Accuracy: 2300.0 m  
Time: 03-11-2020 14:33  
Note: M.Sc.Chemistry ICT enabled classroom

Powered by NoteCam



Latitude: 17.075836  
Longitude: 74.420869  
Accuracy: 2300.0 m  
Time: 03-11-2020 14:33  
Note: M.Sc.Chemistry ICT enabled classroom

Powered by NoteCam



Latitude: 17.077128  
Longitude: 74.419037  
Accuracy: 2400.0 m  
Time: 03-11-2020 14:34  
Note: M.Sc.Chemistry ICT enabled classroom

Powered by NoteCam



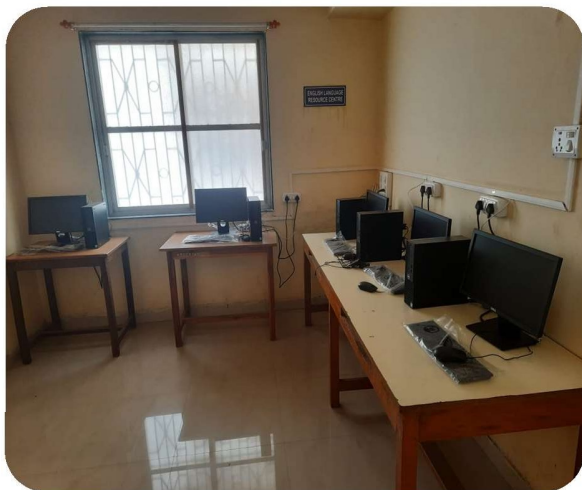
Latitude: 17.077128  
Longitude: 74.419037  
Accuracy: 2400.0 m  
Time: 03-11-2020 14:34  
Note: M.Sc.Chemistry ICT enabled classroom

Powered by NoteCam

### Commerce Laboratory -2018-19



### English Language Laboratory 2018-19



### English Language Laboratory 2018-19





**ICT Enabled Audio Video Hall (2017-18)**

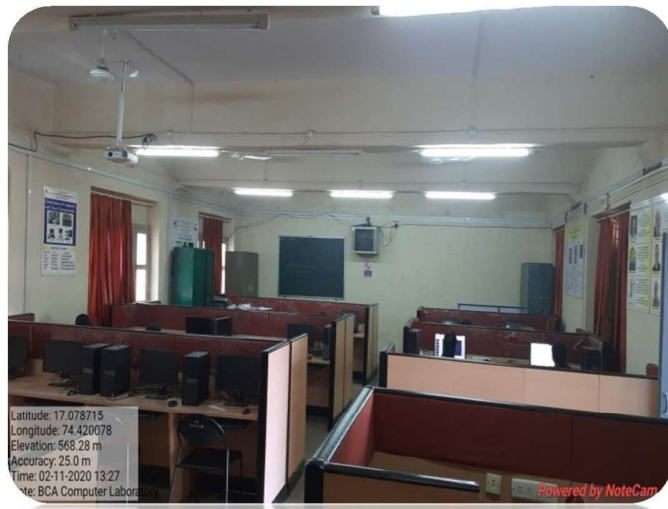
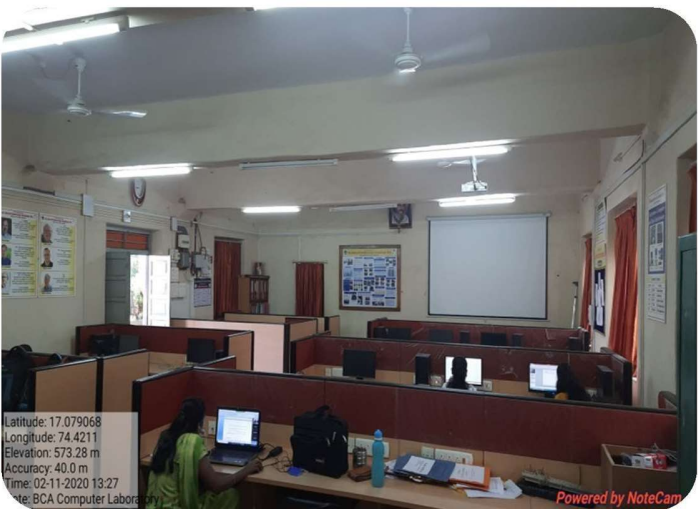


**ICT Enabled Competitive Examination Guidance Centre 2017-18**





# BCA ICT Enabled Laboratory (2008 -09)



Internal Quality Assurance Cell(IQAC)

